

SAVEER



Since 1980

www.saveer.com

Root Trainers & Accessories



SBJRT/04112017-01.25

SAVEER BIOTECH LIMITED

Company Profile

Saveer is India's known manufacturer of root trainers/containers for the nursery plants. We pioneered the special moulding process recognised in forest nurseries, producing millions of tree seedlings in our growing system since two decades.

We are an ISO 9001:2008, 14001:2004, 18001:2007 compliant company best known for our management, environment and health system standards.

Our R & D division is recognised by DSIR, Govt. of India. The division is constantly engaged in developing innovative technologies for economical and qualitative production of plant seedlings with the use of different growing systems.

Grow Big, Healthy Plants and Rooted Cuttings

The cells of these growing system are specially grooved encouraging roots to grow straight down and away from the plant inspite of spiraling around and provide prefect start for all the seeds, seedlings, plugs & cuttings.

Seedings grown in root trainers are vigorous with healthy root to shoot ratio and are usually free of root deformities.

The pop up system of seedlings is very easy & efficient as slight push elevates the plug & protect the roots from transplanting shock.

For big, healthy, well-rooted plants from seed or cuttings, look no further than Saveer Root Trainers!

As per your requirement, select the right product from the catalogue.



SAVEER

ROOT TRAINER & PRO-TRAYS

1.



Code: 0255572

Total Root Trainers Cells	:	12 (4x3)
Length	Width	Height
325 mm	250 mm	170 mm
Diameter of each cell	:	70mm
Volume	:	350 cc

2.



Code: 0255573

Total Root Trainer Cells	:	12 (4x3)
Length	Width	Height
325 mm	250 mm	100 mm
Diameter of each cell	:	70mm
Volume	:	250 cc
Life	:	Multiuse

3.



Code: 0255574



Total Root Trainer Cells	:	40 (8x5)
Length	Width	Height
355 mm	215 mm	115 mm
Each cell	:	Length 40 x Width 40 mm
Volume	:	150 cc
Life	:	Multiuse

Special : Root trainer walls are perforated to cross air.

4.

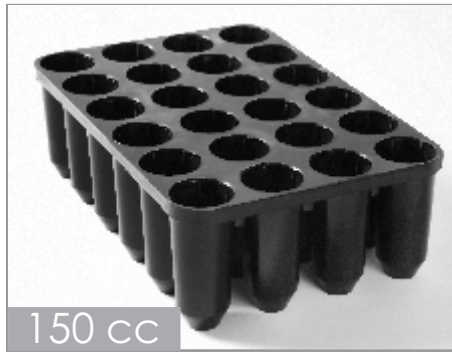


Code: 0255575

Total Root Trainer Cells	:	25 (5x5)
Length	Width	Height
295 mm	295 mm	100 mm
Diameter of each cell	:	50mm
Volume	:	150 cc
Life	:	Multiuse



5.



Code: 0255576

Total Root trainers Cells	:	24 (6x4)
Length	Width	Height
360 mm	240mm	100mm
Diameter of each cell	:	50mm
Volume	:	150 cc
Life	:	Multiuse

6.



Code: 0255577

Total Root Trainer Cells	:	20(5x4)
Length	Width	Height
300 mm	240 mm	100
Diameter of each cell	:	50mm
Volume	:	150 cc

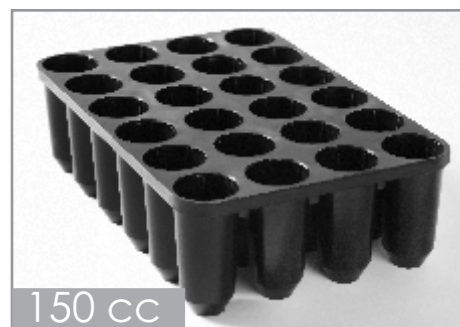
7.



Code: 0255578

Total Root Trainer Cells	:	20(5x4)
Length	Width	Height
285 mm	230 mm	100 mm
Diameter of each cell	:	50mm
Volume	:	150 cc
Life	:	Multiuse

8.



Code: 0255579

Total Root Trainer Cells	:	24 (6x4)
Length	Width	Height
355 mm	235 mm	100 mm
Diameter of each cell	:	50mm
Volume	:	150 cc
Life	:	Multiuse



9.



Code: 0255580

Total Root Trainers Cells	:	40 (8x5)
Length	Width	Height
350 mm	220 mm	105 mm
Diameter of each cell	:	40mm
Volume	:	100 cc
Life	:	Multiuse

10.



Code: 0255581

Total Root Trainer Cells	:	20 (5x4)
Length	Width	Height
185 mm	148 mm	120 mm
Diameter of each cell	:	33mm
Volume	:	70 cc
Life	:	Multiuse

11.

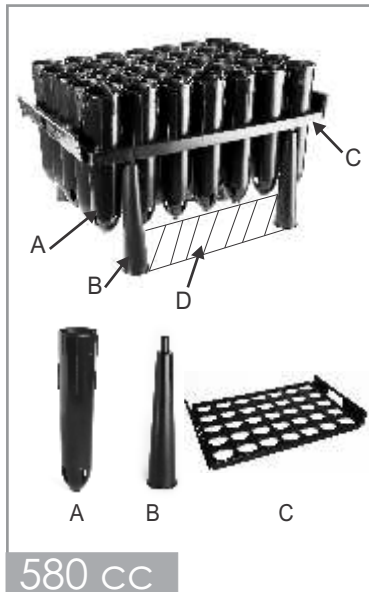


Code: 0255582

Total Root Trainer Cells	:	156 (13x12)
Length	Width	Height
435 mm	340 mm	50 mm
Each cell	:	Length 34 x Width 28 mm
Volume	:	40 cc
Life	:	Multiuse



12.



Code: 0255583

Total Root Trainer Cells : 35 (7x5)
Stand size = Length Width Height
515 mm 370 mm 260 mm
Root trainer Height : 250mm
Diameter of each cell : 65 mm
Volume : 580 cc
Life : Multiuse

The root trainer tray is detachable consists of 3 parts

- A) Root Trainer cells (Code: 0255597)
- B) Legs to hold trainers above ground (Code: 02555104)
- C) Tray to hold root trainers (Code: 0255588)
- D) Ground clearance : 60mm (Gap between root trainer)

13.



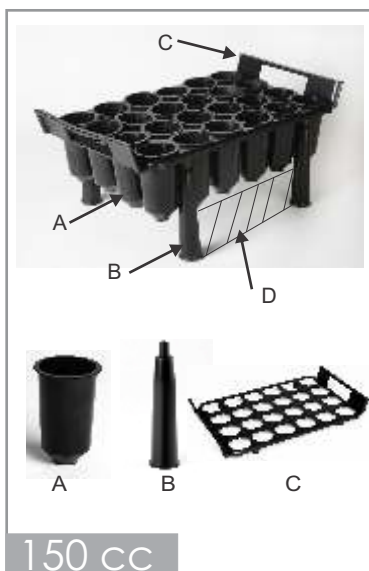
Code: 0255584

Total Root Trainer Cells : 25 (5x5)
Stand size = Length Width Height
355 mm 355 mm 260 mm
Root trainer Height : 180 mm
Diameter of each cell : 53 mm
Volume : 250 cc
Life : Multiuse

The root trainer tray is detachable consists of 3 parts

- A) Root Trainer cells (Code : 0255598)
- B) Legs to hold trainers above ground (Code : 02555104)
- C) Tray to hold root trainers (Code : 0255587)
- D) Ground clearance : 60mm (Gap between root trainer)

14.



Code: 0255585

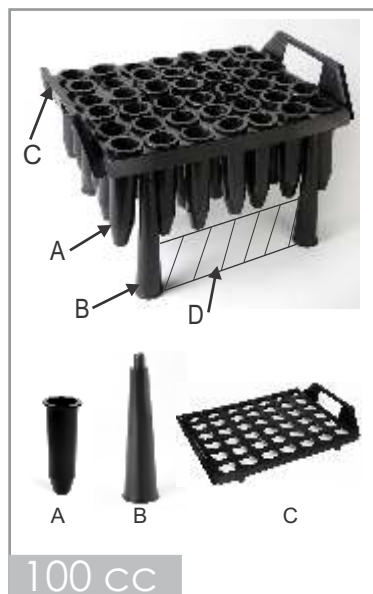
Total Root Trainer Cells : 24 (6x4)
Stand Size = Length Width Height
420 mm 250 mm 180 mm
Diameter of each cell : 50mm
Root trainer Height : 100mm
Volume : 150 cc
Life : Multiuse

The root trainer tray is detachable consists of 3 parts

- A) Root Trainer cells (each) (Code: 02555100)
- B) Legs to up hold the tray (Code: 02555105)
- C) Tray to hold root trainers (Code: 0255590)
- D) Ground clearance : 50mm (Gap between root trainer)



15.



Code: 0255586

Total Root Trainer Cells : 42(7x6)
Stand size = Length Width Height
380 mm 305 mm 225 mm

Root trainer Height : 120mm
Diameter of each cell : 35 mm
Volume : 100 cc
Life : Multiuse

The root trainer tray is detachable consists of 3 parts

- A) Root Trainer cells (Code: 02555102)
- B) Legs to hold trainers above ground (Code: 02555103)
- C) Tray to hold root trainers (Code: 0255589)
- D) Ground clearance : 60mm (Gap between root trainer)

16.



Code: 0255587

Number of cells : 25 (5x5)
Tray Size : Length Width Height
355mm 355mm 50mm
Life : Multiuse

17.



Code: 0255588

Number of cells : 35 (7x5)
Tray Size : Length Width Height
515mm 370mm 50mm
Life : Multiuse

18.



Code: 0255589

Number of cells : 42 (7x6)
Tray Size : Length Width Height
380 mm 305 mm 230 mm
Life : Multiuse



19.



Code: 0255590

Number of cells : 24 (6x4)
Tray Size : Length Width Height
420 mm 250 mm 45 mm
Life : Multiuse

20.



Code: 0255591

Total Root Trainer Cells : 50 (10x5)
Length Width Height
525 mm 265 mm 50 mm
Diameter of each cell : 50mm
Volume : 70 cc
Life : For one time use

21.



Code: 0255591.1

Total Root Trainer Cells : 40 (8x5)
Length Width Height
425 mm 265 mm 50 mm
Diameter of each cell : 50mm
Volume : 70 cc
Life : For one time use

22.



Code: 0255592

Total Root Trainer Cells : 70 (10x7)
Length Width Height
560 mm 360 mm 50 mm
Diameter of each cell : 50mm
Volume : 70 cc
Life : For one time use



23.



Code: 0255593

Total Root Trainer Cells	:	98 (14x7)
Length	Width	Height
540 mm	280 mm	40 mm
Diameter of each cell	:	34mm
Volume	:	30 cc
Life	:	For one time use

24.



Code: 0255594

Total Root Trainer Cells	:	221(17x13)
Length	Width	Height
460 mm	355 mm	45 mm
Each Root Trainer cell	:	Length 22 x Width 22mm
Volume	:	20 cc
Life	:	For one time use

25.



Code: 0255595

Height	:	360mm
Diameter of cell	:	Length 10 x Width 9 mm
Volume	:	2300 cc
Life	:	Multiuse

26.



Code: 0255596

Height	:	130mm
Diameter. of cell	:	130mm
Volume	:	1050 cc
Life	:	Multiuse



27.



Code: 0255597

Height : 250mm
Diameter of cell : 65 mm
Volume : 580 cc
Life : Multiuse

28.



Code: 0255598

Height : 197mm
Diameter of cell : 55 mm
Volume : 350 cc
Life : Multiuse

29.



Code: 0255599

Height : 180mm
Diameter of cell : 53 mm
Volume : 250 cc
Life : Multiuse

30.



Code: 02555100

Height : 165mm
Diameter of cell : 50 mm
Volume : 200 cc
Life : Multiuse



31.



Code:02555101

Height : 220 mm
Diameter of cell : 40 mm
Volume : 170 cc
Life : Multiuse

32.



Code: 02555102

Height : 100mm
Diameter of cell : 50 mm
Volume : 150 cc
Life : Multiuse

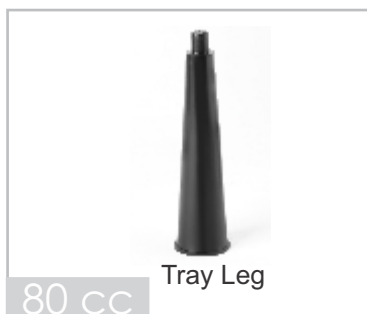
33.



Code: 02555103

Height : 120mm
Diameter of cell : 35 mm
Volume : 100 cc
Life : Multiuse

34.



Code:02555104

Height : 160mm
Diameter of cell : 30 mm
Volume : 80 cc
Life : Multiuse

35.



Code: 02555105

Height : 140 mm
Diameter of cell : 25 mm
Volume : 50 cc
Life : Multiuse



Biodegradable Cells

100% degradable in soil

36.



Code:02555106

Total cells : 10 (2x5)
 Length Width Height
 300 mm 120 mm 60 mm
 Diameter of Cell : Length 50 x Width 55 mm
 Volume : 70 cc
 Life : For one time use

37.



Code:02555107

Total cells : 12 (2x6)
 Length Width Height
 300mm 100mm 50mm
 Diameter of Cell : Length 35 x Width 35 mm
 Volume : 60 cc

38.



Code:02555108

Total cells : 18 (3x6)
 Length Width Height
 205 mm 120 mm 50 mm
 Diameter of Cell : Length 35 x Width 35 mm
 Volume : 30 cc
 Life : For one time use

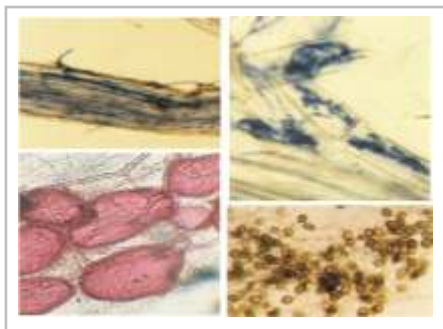
39.



Code : 02555109
 Cocopeat Bricks

- Ideal for potting mixes
- Excellent air porosity and water retention
- Irrigation efficiency
- Faster germination times & quicker seedling rotations
- Environment friendly.

40.

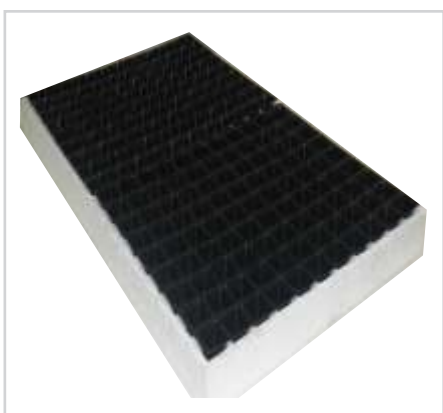


Code : 02555110

Active+

- Eco-friendly Mycorrhiza biofertilizer.
- Synergises nutrient uptake,
- Excellent for nursery production.
- Available in powder and tablet form.

41.



Thermocol Trays

Protray designed to fit in specially moulded thermocol to provide minimum thermal conductivity for insulation purpose very good for winter seedling production.

Code: 02555702

Total Root trainers Cells : 198 (18x11)

Length Width Height

730 mm 452mm 56mm

Each Root Trainers cells : 36mm x 36mm

Life : Multiuse

We have different type of Thermocol trays.

42.



Code:02555111

Vermiculite

- It is sterile, porous and light weight material.
- Extensively used as growing medium in root trainers .
- It absorbs water very fast & retains moisture for longer duration.

43.



Code:02555112

Tag-plastic

- Available in various colors and lengths.
- Material - Polymer UV stabilized.



44.



Code:02555113

Forestry Pellets

- Companies of soil free medium in the form of pellets covered with fine fabric.
- The roots on elongation pass through the fabric which is degradable.
- The sapling can be brought out of the pellet more easily than conventional root trainers.
- Field plantation targets can be achieved by using pellets for mass production of plant material.

45.



Code : 02555114

Perlite

- An inert porous material and found very effective growing medium for root trainers.
- Perlite's porous texture retains moisture necessary for plant growth.

46.



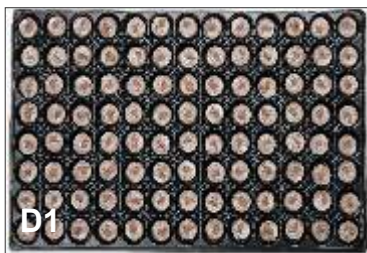
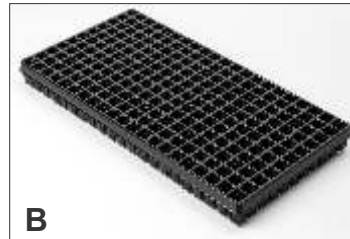
Code : 02555115

Crystal Collloid

- It is water retaining compound (100% biodegradable) Absorbs water >150 times of its own weight and release to roots.
- Very useful in nursery transplanting.
- Used before planting the sapling.



MORE SIZES ARE AVAILABLE



Mistchamber Installations



Raipur, Chattisgarh



Forestry Dept. - Orrisa



Ballarpur, Industries Ltd.



PepsiCO, Punjab

Our Other Products

- Mistchamber
- Greenhouse
- Environment Control
- Polyhouse
- Screenhouse
- Nethouse
- Plant Tissue Culture Lab, Turn Key Projects
- Seed Storage Modules
- Insectaries
- Protected Cultivation Projects
 - *Orochids, Tomato, Cucumber*
- PAR Photosynthesis Lamp
- Misting Unit
- Piltz Timer
- De-Humidifier
- Ozone Generation System for disinfection
- Temperature Data Logger
- Humidity Data Logger
- Active+ (Biofertilizer as Mycorrhiza)
- Crystal Colloid (Water retaining crystals)



SAVEER BIOTECH LIMITED

Registered Office:

1442, Chaudhary Hardhyan Singh Marg, New Delhi-110003

Phone: +91-11-2460 2074, 2462 2889

Fax: +91-11-24620211, 24643326

Email: business@saveer.com

Website : www.saveer.com

Factory:

D-54, UPSIDC, Site IV, Gautam Budh Nagar
Greater Noida, U. P.

Phone: +91-120-2341864, 6527912, 2340019

Fax: +91-120-2326714, 4052510